

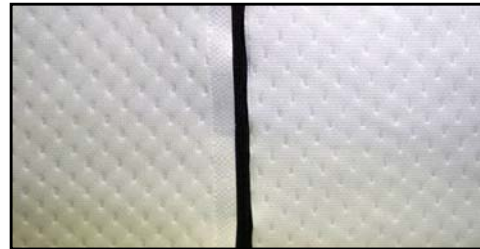
TekniClean Quilted Polyester Ultrasonic Sealed Cleanroom Wiper

Product Description

Tekniclean polyester knit wipes are made with a hi strength continuous filament polyester yarn in a double knit, no run interlock pattern. A unique quilting pattern is used in the 2-ply polyester wipes for optimum contamination & liquid holding capacity, resulting in the most absorbent, clean & durable wipe available. A proprietary process using pressure & heat is used to create an ultrasonic edge seal or border seal for fiber & particle retention. Knitting, pre-washing, cutting, sealing, washing and packaging are all done in house for optimum control & cleanliness. The wipe is ultra clean and highly sorbent making it ideal for wiping critical surfaces. All Tekniclean wipes utilize Statistical Process Control in manufacturing and are lot traceable from raw material to finished product. Class 10 Laundered & Packaged

Composition & Attributes

- * 100% Hi Strength Polyester fiber (continuous filament, double knit)
- * Quilted 2-ply construction for sorbency & durability
- * Ultra Low particle and fiber generation
- * Ultrasonic Sealed Borders or Edges for fiber & particle retention
- * Free of Silicon, Amides, and DOP contamination
- * Solvent safe double bag cleanroom packaging
- * Resists abrasion when used with rough surfaces
- * Works well with IPA and other cleaning solvents



Applications

- * Ideal for wiping critical surfaces to achieve ultra cleanliness
- * Best choice for maximum absorbency, durability & cleanliness
- * Works well for particle removal & resistance with solvents
- * Soft texture for scratch sensitive surfaces & very durable
- * Autoclavable for Aseptic environments
- * Compatible with ISO Class 4-5 (Class 10-100) environments

Physical Properties

- * Basis Weight 260g/m²
- * Material 100% Pure Polyester Fiber
Continuous Filament, Double Knit
- * Absorbency Sorptive Capacity: >800 mL/m²
Sorptive Rate: <1 second
- * Test Method IEST-RP-CC004.3 Section 8.1

Purity Specifications

- * Particles & Fibers

Particles (>0.5micron)	2.3 x 10(6) particles/m ²
(> 5 micron)	105,000 particles/m ²
Fibers (>100 micron)	<310/m ²
- * Nonvolatile Residue

IPA Extractant	0.05 ppm
DIW Extractant	0.01 ppm
- * Ions

Sodium (Na+)	0.12 ppm
Potassium (K+)	0.01 ppm
Chloride (Cl+)	0.03 ppm
Calcium (Ca+)	0.08 ppm

Test Method

- | | |
|-----------------------------|-------------------|
| Orbital Shake Test | IEST-4.3-6.1.4 |
| Short Term Extraction | IEST-4.3-7.1.2 |
| Standard Extractable Method | IEST-4.3-7.2.2.1B |

Ordering Information

<u>Product</u>	<u>Size</u>	
TC2PU3-99 (Sealed Edge)	9" X 9"	(22.9cm x 22.9cm)
TC2PB3-99 (Sealed Border)	9" X 9"	(22.9cm x 22.9cm)

Packaging

- | | |
|---------------------------------|-------------|
| 100 Ea/Bag (2 inner bags of 50) | 10 Bag/Case |
| 100 Ea/Bag (2 inner bags of 50) | 10 Bag/Case |